

## Biological Activity Reaction Test (BART) KITS Sulfate Reducing Bacteria

### DESCRIPTION

Much like the test for Iron Bacteria, this Biological Reaction Activity Test (BART) for Sulfate-Reducing Bacteria makes determining the presence of sulfate-reducing bacteria easy.

Collect a water sample from the well in question and pour it into the BART testing vial. Observe the vial for a period of eight days. The SRB BART test will display a positive result when there is foam produced and/or a black ring develops around the interior vial of the testing tube.

Depending on how quickly a reaction is observed, this provides you with an indication of the bacterial count within the water sample. For example, if a reaction is observed within one day of starting the test, the bacteria count is high with a reading equal to, or greater than, 2,200,000 CFU/ml (colony forming unit). Additionally, if no reaction is seen within 6 days, the bacteria count is equal to 1400 CFU/ml. A negative test has no black color, no color, and no clouding within 9 days.

The SRB BART kit instructions include an easy to decipher chart that can be used for determining the bacterial count of your sample.



- **Patented:** BART kits utilize a proprietary testing reagent to deliver highly accurate results.
- **Affordable:** Laboratory quality results at an affordable price.
- **Field Ready:** Small, lightweight, and highly portable, BART kits are designed to be used in the field.
- **Rapid Results:** Receive your results within 15 days or less.

**Eliminate the Guesswork**

**Establish the Bacterial Type and Severity**

**Develop a Targeted Treatment**

**Verify Treatment Effectiveness**

**Determine Maintenance Intervals**

### ALSO AVAILABLE:



**Iron Reducing Bacteria IRB Biological Activity Reaction (BART) Test**



**Slime Forming Bacteria SLYM Biological Activity Reaction (BART) Test**



### Geoquip Water Solutions Limited

Unit 7, Sovereign Centre  
Farthing Road Industrial Estate  
Ipswich, IP1 5AP, ENGLAND

TEL: + 44 (0)1473 462046  
EMAIL: [info@geoquipservices.co.uk](mailto:info@geoquipservices.co.uk)  
[www.geoquipwatersolutions.com](http://www.geoquipwatersolutions.com)

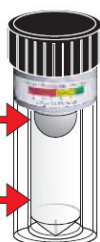
# Biological Activity Reaction Test (BART) KITS

## Sulfate Reducing Bacteria

### Overview

#### ABSENT (Negative - Non-aggressive)

The solution has NO black slime.



#### PRESENT (Positive - Aggressive)

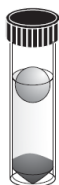
A **Black** slime ring beneath the ball,  
and/or  
A **Black** slime growth at the base of tube.



1. View test each day for up to 15 days.
2. Observe any growths/color changes.
3. Compare with description(s).

### Advanced test information.

#### Determination of Dominant Bacteria



BLACK only in BASE(BB) - Dense anaerobic SRB consortium.



BLACK only around BALL/TOP(BT) - Aerobic SRB consortium.



BLACK in BASE and around BALL - Combination of aerobic(BT) and anaerobic(BB) SRB.



Solution CLOUDY - Anaerobic bacteria present.

#### Determination of Potential SRB Population - observe daily for reaction.

##### Days to reaction - Approximate SRB Population (cfu/mL)



1 - 2,200,000  
2 - 500,000  
3 - 115,000  
4 - 27,000  
5 - 6000

Aggressive



6 - 1400  
7 - 325  
8 - 75

Moderate



9 - 20  
10 - 5  
11 - <1

Not Aggressive